

The throwable  
microphone  
for audience  
engagement



Catchbox is the world's first soft, wireless microphone that you can throw into the audience to kickstart a discussion. Catchbox improves lectures, conferences, and group work by encouraging audiences and groups to share ideas and discuss problems.

**CATCH**<sup>®</sup>  
**BOX**

# Engage Your Audience!

Getting your audiences involved can be difficult. Normal microphones are often slow and cumbersome to pass around. In addition, they can quickly kill the flow of discussion. That's why we created the Catchbox. The colorful box is intuitive to use, and having it thrown around engages audience members while breaking the ice. It gets people talking and sharing ideas, and can be used for different types of events - from large conferences to university lectures.



## Catchbox in Education

Make lectures fun and engaging by getting everyone actively involved in the discussion.

## Catchbox in Meetings

Hosting a company all-hands or a workshop? Catchbox breaks the ice and gets employees talking.

## Catchbox in Events

Asking questions from the audience is easy and fun, even in crowded and packed settings.

" It makes for a better, slicker and more audible audience engagement "

FT FINANCIAL  
TIMES

" Play becomes central to the tone of the meeting and more people engage in the conversation. "

**Inc.**

## Some of our happy customers



AdRoil



pebble

TEDYouth



Google



IBM

MillerCoors



Microsoft

XPRIZE



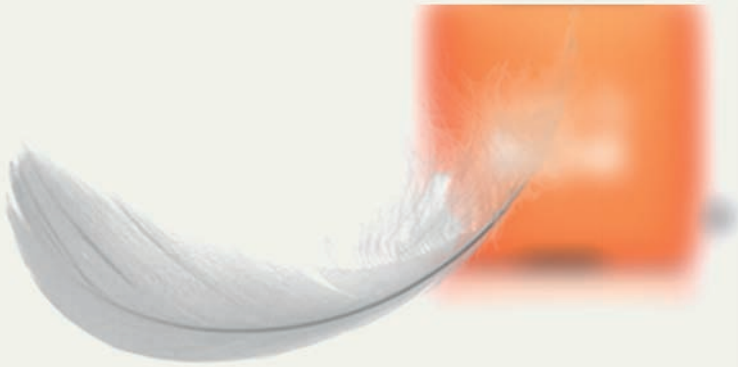
Etsy

cbbvie

# Ground breaking design!

The Catchbox is a combination of innovative product design and state of the art audio technology. With a microphone element suitable for professionals and our innovative AutoMute technology, Catchbox sets new standards for the audience microphone. The combination of ultra-light materials and technical fabrics create a product that is durable and easy to use. In addition, the unique locking mechanism means that the cover is easy to replace and change.

Catchbox comes in three basic colors: Blue, Orange and Green.



## Light & Soft

The Catchbox is made from a combination of durable foams and technical fabric, making it extremely light for its size as well as durable.

## Dirt Repellent

The Catchbox cover is specially treated with a teflon coating that repels dirt and avoids stains. The coating is also anti-bacterial.



## Magnetic Locking

A magnetic mechanism locks the microphone in to the cover. With a simple twist and pull motion, one can easily access the electronics and batteries inside.

## Active AutoMute

The Active Automute senses the motion of the device and smartly switches off the audio when the Catchbox is thrown caught or dropped.



# Two different products



## Catchbox Lite Wireless Microphone System

### General Specifications

Max Wireless Range:	30m / 100ft (Line of Sight)
Frequency Band	2.4GHz ISM band (2.400-2.485 GHz)
Recommended Audience Size	1-100 people
Audio Frequency Response	50-10000Hz
Signal Type	Digital
Automatic Frequency Hopping	Yes
Antenna Diversity	Yes
Max # of systems in one space	4
System Latency	15-20ms

### Receiver

Weight	270g / 9.5oz
Dimensions (without antennas)	13 x 12.5 x 3.5 cm / 5.1 x 5 x 1.4 in
Power supply	5 VDC
Audio output	6.3mm / 1/4in jack

### Transmitter (with Cover)

Weight (including batteries)	365g / 12.8oz
Dimensions	18 x 18 x 18 cm / 7 x 7 x 7 in
Microphone Element	Electret condenser
Microphone Shape	Omni Directional
Battery Type	2 x AA (LR6) alkaline
Battery Life	>10 hours (with alkaline batteries)
Radio Power Output	10mW

## \*Catchbox Pro Beltpack Modification

### General Specifications

Weight without 3rd party transmitter	280g/9.9oz
Dimension	18 x 18 x 18 cm / 7 x 7 x 7 in
Battery Type (of Muting Circuit)	1 x AA (LR6) alkaline
Battery Life (of Muting Circuit)	>20 hours (with alkaline batteries)
Microphone Element	Electret condenser
Microphone Pattern Omni	Directional
Additional System Latency	0
Adapter Cables provided	4 pin mini XLR (Shure)
	3.5mm jack (Sennheiser)
	3 pin mini XLR (AKG)

### Compatible 3rd Party Transmitters (pre-tested for compliance)

Shure	ULX-D1
	QLX-D1
	UR1M
Sennheiser	SK 500 (Evolution Wireless)
	SK 300 (Evolution Wireless)
	SK 100 (Evolution Wireless)
AKG	DPT 700
	PT 470
	PT 420

\* Catchbox Pro Module requires a third party transmitter and receiver to work and they are not included in the package.

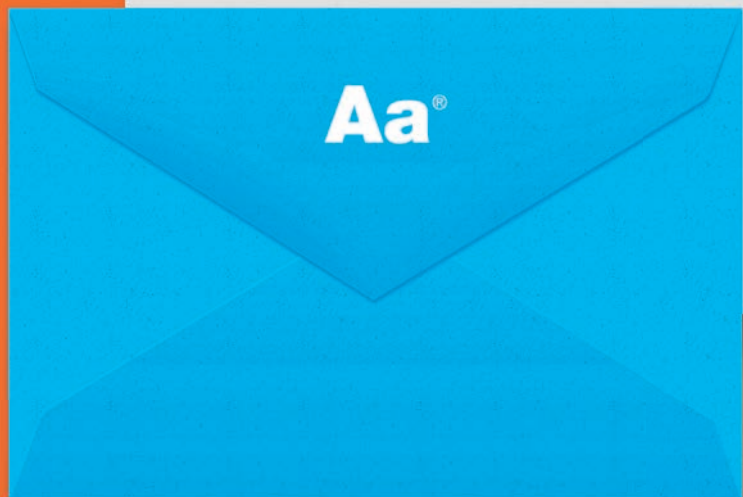
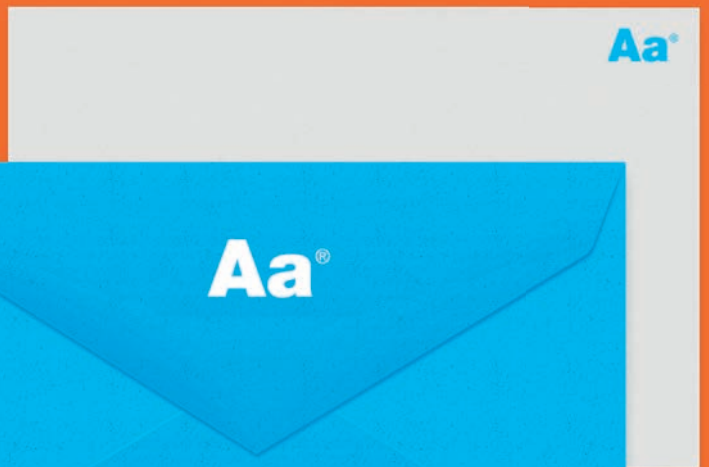
# Catchbox Custom Cover

Take your Catchbox to the next level and put your brand in the spotlight! Use the Catchbox Custom Cover as an entirely new medium to communicate your own brand effectively.

[www.getcatchbox.com](http://www.getcatchbox.com)



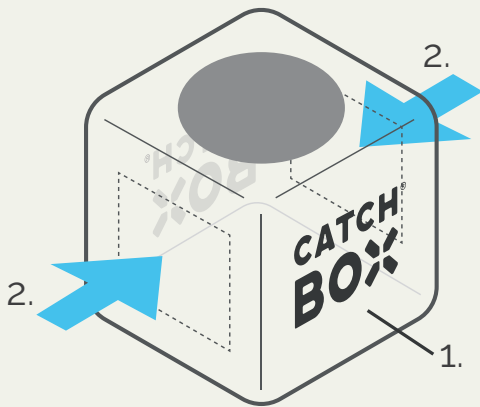
Make your  
Catchbox  
truly "yours"



The Custom Cover is a unique opportunity to turn your Catchbox into a dynamic and visual medium. Whether it's your own logo, crucial event information, or a spot for sponsors, the Custom Cover is guaranteed to give you the extra exposure boost.

# So what is a custom cover?

The Custom Cover service allows for the soft "pillow" cover of the Catchbox to be branded according to your liking. There are two individual customizable components:



1. The base color of the cover can be set to any color i.e brand colors.
2. Your visual material i.e company logo, event information or sponsorship space can be placed on two sides of the box. The Custom Cover product is compatible with both the Catchbox Pro and the Catchbox Lite products.



# How can you make it happen

1. Specify the color of your Custom Catchbox
2. Specify the picture content for the two sides of your Custom Cover
3. Contact your Official Catchbox Partner for an offer and a lead time

Find your partners contact information at the bottom of this page.  
The Custom Covers can be purchased as a separate item or as a bundle,  
together with the other components of the Catchbox product.



## Buy as a Bundle

If you are planning on purchasing a Catchbox product, you can upgrade the Regular Cover into a Custom Cover in the same purchase.



## Buy individual Covers

If you already own a Catchbox microphone, you can purchase the Custom Covers separately so you don't have to buy a complete set every time.

Official Catchbox Partner

Contact Information  
info@getcatchbox.com / sales@getcatchbox.com  
Address: Braslas str. 29A-3 Riga LV-1084, Latvia  
EU: +441938880007 -1  
USA: +1 (978) 767-2496 -1

**CATCH**<sup>®</sup>  
**BOX**